

# SUMMARY OF QUANTITIES

PROJECT NO. 11CR.20861.19	SHEET NO.	TOTAL NO.
------------------------------	-----------	-----------

PROJECT	COUNTY	MAP	ROUTE	DESCRIPTION	TYP	FINAL SURFACE TESTING REQUIRED	LENGTH	WIDTH	ASPHALT SURFACE TREATMENT, MAT & SEAL	ASPHALT SURFACE TREATMENT, SPLIT SEAL	ASPHALT SURFACE TREATMENT, TRIPLE SEAL	ASPHALT SURFACE TREATMENT, TRIPLE SEAL (LIGHTWEIGHT AGGREGATE)
NO		NO			NO		MI	FT	SY	SY	SY	SY
11CR.20861.19	Surry	63	SR 2018	FROM SR 2017 TO SR 2019	2	NO	2.36	20	SY	SY	SY	SY
11CR.20861.19	Surry	64	SR 1387	FROM SR 1389 TO SR 1376	2	NO	0.49	18				27,691
11CR.20861.19	Surry	65	SR 2147	FROM NC 268 TO SR 2147	2	NO	0.39	20				5,174
11CR.20861.19	Surry	66	SR 2212	FROM SR 2200 TO DEAD END	1	NO	0.99	18				4,576
11CR.20861.19	Surry	67	SR 2099	FROM NC 268 TO DEAD END	1	NO	0.2	16				10,454
11CR.20861.19	Surry	68	SR 1806	NC 89 TO SR 1808	2	NO	1.41	20				1,877
11CR.20861.19	Surry	69	SR 2061	FROM SR 2064 TO SR 2048	2	NO	1.58	18				16,544
11CR.20861.19	Surry	70	SR 2095	FROM SR 2019 TO DEAD END	1	NO	0.36	16				16,685
11CR.20861.19	Surry	71	SR 1896	FROM NC 89 TO SR 1742	2	NO	0.13	18				3,379
11CR.20861.19	Surry	72	SR 2201	FROM SR 2200 TO SR 2243	2	NO	0.93	18				1,373
11CR.20861.19	Surry	73	SR 2049	FROM LYNCHBURG ROAD TO EOM	1	NO	0.99	18				9,821
11CR.20861.19	Surry	74	SR 1891	FROM SR 1719 TO DEAD END	1	NO	0.1	20				10,454
11CR.20861.19	Surry	75	SR 1746	FROM NC 103 TO SR 1911	2	NO	0.49	20				1,173
11CR.20861.19	Surry	76	SR 2159	FROM SR 2165 TO CUL-DE-SAC	1	NO	0.19	20				2,229
11CR.20861.19	Surry	77	SR 2089	FROM SR 2047 TO DEAD END	1	NO	0.4	16				3,755
11CR.20861.19	Surry	78	SR 2104	FROM SR 2029 TO EOM	1	NO	0.3	18				3,168
11CR.20861.19	Surry	79	SR 2135	FROM SR 2165 TO SR 2134	2	NO	0.11	20				1,291
11CR.20861.19	Surry	80	SR 1605	FROM SR 1606 TO SR 1602	2	NO	1.69	18				17,846
11CR.20861.19	Surry	81	SR 2157	FROM SR 1953 TO CUL-DE-SAC	1	NO	0.35	20				4,107
11CR.20861.19	Surry	82	SR 1835	FROM SR 1836 TO STOKES CO LINE	2	NO	0.98	18				10,349
11CR.20861.19	Surry	83	SR 2040	FROM NC 268 TO NC 268	2	NO	0.5	20				5,867
11CR.20861.19	Surry	84	SR 1455	FROM SR 1331 TO EOM	1	NO	0.51	18				5,386
11CR.20861.19	Surry	85	SR 2134	FROM SR 2135 TO SR 2133	2	NO	0.08	20				939
11CR.20861.19	Surry	86	SR 2077	FROM SR 2069 TO SR 2075	2	NO	1.02	20				11,968
11CR.20861.19	Surry	87	SR 1413	FROM NC 89 TO SR 1408	2	NO	1.02	18				10,771
11CR.20861.19	Surry	88	SR 1789	FROM SR 1791 TO SR 1794	2	NO	1.62	18				17,107
11CR.20861.19	Surry	89	SR 1794	FROM SR 1789 TO SR 1791	2	NO	0.5	18				5,280
11CR.20861.19	Surry	90	SR 2202	FROM SR 2024 TO SR 2019	2	NO	1.46	20				17,131
11CR.20861.19	Surry	91	SR 2079	FROM SR 2080 TO SR 2094	2	NO	0.62	18				6,547
11CR.20861.19	Surry	92	SR 2086	FROM NC 268 TO PVMT CHANGE	2	NO	1.57	20				18,421
11CR.20861.19	Surry	93	SR 1408	FROM SR 1412 TO SR 1411	2	NO	1.9	18				20,064
11CR.20861.19	Surry	94	SR 2133	FROM SR 2165 TO SR 2134	2	NO	0.1	20				1,173
11CR.20861.19	Surry	95	SR 2076	FROM SR 2075 TO SR 2077	2	NO	0.76	18				8,026
11CR.20861.19	Surry	96	SR 1796	FROM SR 1794 TO STOKES CO LINE	2	NO	0.88	20				10,325

# SUMMARY OF QUANTITIES

PROJECT NO.	SHEET NO.	TOTAL NO.
11CR.20861.19		

PROJECT	COUNTY	MAP	ROUTE	DESCRIPTION	TYP	FINAL SURFACE TESTING REQUIRED	LENGTH	WIDTH	ASPHALT SURFACE TREATMENT, MAT & SEAL	ASPHALT SURFACE TREATMENT, SPLIT SEAL	ASPHALT SURFACE TREATMENT, TRIPLE SEAL	ASPHALT SURFACE TREATMENT, TRIPLE SEAL (LIGHTWEIGHT AGGREGATE)
11CR.20861.19	Surry	97	SR 1408	FROM NC 89 TO SR 1412	2	NO	0.98	18			10,349	
11CR.20861.19	Surry	98	SR 2256	FROM NC 268 TO NC 268	2	NO	0.25	16			2,347	
11CR.20861.19	Surry	99	SR 1678	FROM SR 1394 TO SR 1628	2	NO	0.71	20			8,331	
11CR.20861.19	Surry	100	SR 1820	FROM SR 1774 TO SR 1877	2	NO	0.41	18			4,330	
11CR.20861.19	Surry	101		<b>*DELETED*</b>								
11CR.20861.19	Surry	102		<b>*DELETED*</b>								
11CR.20861.19	Surry	103	SR 1361	FROM SR 1429 TO DEAD END	1	NO	0.2	16		1,877		
11CR.20861.19	Surry	104	SR 1386	FROM SR 1394 TO DEAD END	1	NO	0.19	18		2,006		
11CR.20861.19	Surry	105	SR 2055	FROM SR 2048 TO DEAD END	1	NO	0.41	16		3,849		
11CR.20861.19	Surry	106	SR 2163	FROM SR 2012 TO DEAD END	1	NO	0.39	20		4,576		
11CR.20861.19	Surry	107	SR 2257	FROM SR 1003 TO DEAD END	1	NO	0.27	16		2,534		
11CR.20861.19	Surry	108	SR 2148	FROM SR 2144 TO DEAD END	1	NO	0.22	20		2,581		
11CR.20861.19	Surry	109	SR 2407	FROM SR 2406 TO DEAD END	1	NO	0.21	20		2,464		
11CR.20861.19	Surry	110	SR 1777	FROM NC 89 TO DEAD END	1	NO	0.2	16		1,877		
11CR.20861.19	Surry	111	SR 1533	FROM SR 1350 TO DEAD END	1	NO	0.19	20		2,229		
11CR.20861.19	Surry	112	SR 1629	FROM SR 1628 TO DEAD END	1	NO	0.13	16		1,220		
11CR.20861.19	Surry	113	SR 1526	FROM SR 1310 TO DEAD END	1	NO	0.11	20		1,291		
11CR.20861.19	Surry	114	SR 2424	FROM SR 1682 TO DEAD END	1	NO	0.11	20		1,291		
11CR.20861.19	Surry	115	SR 2109	FROM NC 268 TO DEAD END	1	NO	0.1	20		1,173		
11CR.20861.19	Surry	116	SR 1680	FROM SR 1678 TO EOM	1	NO	0.07	20		821		
11CR.20861.19	Surry	117	SR 2435	FROM SR 2415 TO DEAD END	1	NO	0.06	18		634		
<b>TOTAL FOR PROJ NO. 11CR.20861.19</b>							<b>32.19</b>		<b>76,405</b>		<b>276,075</b>	
<b>GRAND TOTAL</b>							<b>32.19</b>		<b>76,405</b>		<b>276,075</b>	

PROJECT NO.	SHEET NO.	TOTAL NO.
11CR.20861.19		

## THERMOPLASTIC AND PAINT QUANTITIES

PROJECT NO	COUNTY	MAP	ROUTE	DESCRIPTION	LENGTH	WIDTH	4810000000-E		4835000000-E	4840000000-N	4905000000-N
							4" WHITE PAINT	4" YELLOW PAINT	24" WHITE PAINT	PAINT MSG SCHOOL	SNOW PLOWABLE MARKERS
11CR.20861.19	Surry	63	SR 2018	FROM SR 2017 TO SR 2019	2.36	20	49,843	49,843			
11CR.20861.19	Surry	64	SR 1387	FROM SR 1389 TO SR 1376	0.49	18	10,349	10,349			
11CR.20861.19	Surry	65	SR 2147	FROM NC 268 TO SR 2147	0.39	20					
11CR.20861.19	Surry	66	SR 2212	FROM SR 2200 TO DEAD END	0.99	18	20,909	20,909			
11CR.20861.19	Surry	67	SR 2099	FROM NC 268 TO DEAD END	0.2	16					
11CR.20861.19	Surry	68	SR 1806	NC 89 TO SR 1808	1.41	20	29,779	29,779			
11CR.20861.19	Surry	69	SR 2061	FROM SR 2064 TO SR 2048	1.58	18	33,370	33,370			
11CR.20861.19	Surry	70	SR 2095	FROM SR 2019 TO DEAD END	0.36	16					
11CR.20861.19	Surry	71	SR 1896	FROM NC 89 TO SR 1742	0.13	18	2,746	2,746			
11CR.20861.19	Surry	72	SR 2201	FROM SR 2200 TO SR 2243	0.93	18	19,642	19,642			
11CR.20861.19	Surry	73	SR 2049	FROM LYNCHBURG ROAD TO EOM	0.99	18	20,909	20,909			
11CR.20861.19	Surry	74	SR 1891	FROM SR 1719 TO DEAD END	0.1	20					
11CR.20861.19	Surry	75	SR 1746	FROM NC 103 TO SR 1911	0.49	20	10,349	10,349			
11CR.20861.19	Surry	76	SR 2159	FROM SR 2165 TO CUL-DE-SAC	0.19	20					
11CR.20861.19	Surry	77	SR 2089	FROM SR 2047 TO DEAD END	0.4	16					
11CR.20861.19	Surry	78	SR 2104	FROM SR 2029 TO EOM	0.3	18					
11CR.20861.19	Surry	79	SR 2135	FROM SR 2165 TO SR 2134	0.11	20					
11CR.20861.19	Surry	80	SR 1605	FROM SR 1606 TO SR 1602	1.69	18	35,693	35,693			
11CR.20861.19	Surry	81	SR 2157	FROM SR 1953 TO CUL-DE-SAC	0.35	20					
11CR.20861.19	Surry	82	SR 1835	FROM SR 1836 TO STOKES CO LINE	0.98	18	20,698	20,698			
11CR.20861.19	Surry	83	SR 2040	FROM NC 268 TO NC 268	0.5	20	10,560	10,560			
11CR.20861.19	Surry	84	SR 1455	FROM SR 1331 TO EOM	0.51	18					
11CR.20861.19	Surry	85	SR 2134	FROM SR 2135 TO SR 2133	0.08	20					
11CR.20861.19	Surry	86	SR 2077	FROM SR 2069 TO SR 2075	1.02	20	21,542	21,542			
11CR.20861.19	Surry	87	SR 1413	FROM NC 89 TO SR 1408	1.02	18	21,542	21,542			
11CR.20861.19	Surry	88	SR 1789	FROM SR 1791 TO SR 1794	1.62	18	34,214	34,214			
11CR.20861.19	Surry	89	SR 1794	FROM SR 1789 TO SR 1791	0.5	18	10,560	10,560			
11CR.20861.19	Surry	90	SR 2202	FROM SR 2024 TO SR 2019	1.46	20	30,835	30,835			
11CR.20861.19	Surry	91	SR 2079	FROM SR 2080 TO SR 2094	0.62	18	13,094	13,094			
11CR.20861.19	Surry	92	SR 2086	FROM NC 268 TO PVMT CHANGE	1.57	20	33,158	33,158			
11CR.20861.19	Surry	93	SR 1408	FROM SR 1412 TO SR 1411	1.9	18	40,128	40,128			
11CR.20861.19	Surry	94	SR 2133	FROM SR 2165 TO SR 2134	0.1	20					
11CR.20861.19	Surry	95	SR 2076	FROM SR 2075 TO SR 2077	0.76	18	16,051	16,051			
11CR.20861.19	Surry	96	SR 1796	FROM SR 1794 TO STOKES CO LINE	0.88	20	18,586	18,586			
11CR.20861.19	Surry	97	SR 1408	FROM NC 89 TO SR 1412	0.98	18	20,698	20,698			
11CR.20861.19	Surry	98	SR 2256	FROM NC 268 TO NC 268	0.25	16					

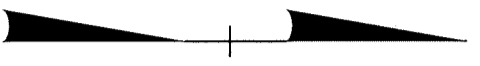
PROJECT NO.	SHEET NO.	TOTAL NO.
11CR.20861.19		

## THERMOPLASTIC AND PAINT QUANTITIES

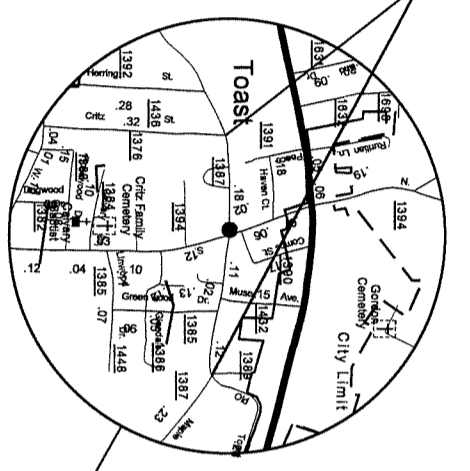
PROJECT NO	COUNTY	MAP	ROUTE	DESCRIPTION	LENGTH	WIDTH	4810000000-E				
							4" WHITE PAINT	4" YELLOW PAINT	24" WHITE PAINT	PAINT MSG SCHOOL	
							LF	LF	LF	EA	SNOW PLOWABLE MARKERS
11CR.20861.19	Surry	99	SR 1678	FROM SR 1394 TO SR 1628	0.71	20	14,995	14,995			
11CR.20861.19	Surry	100	SR 1820	FROM SR 1774 TO SR 1877	0.41	18	8,659	8,659			
11CR.20861.19	Surry	101		*DELETED*							
11CR.20861.19	Surry	102		*DELETED*							
11CR.20861.19	Surry	103	SR 1361	FROM SR 1429 TO DEAD END	0.2	16					
11CR.20861.19	Surry	104	SR 1386	FROM SR 1394 TO DEAD END	0.19	18					
11CR.20861.19	Surry	105	SR 2055	FROM SR 2048 TO DEAD END	0.41	16					
11CR.20861.19	Surry	106	SR 2163	FROM SR 2012 TO DEAD END	0.39	20					
11CR.20861.19	Surry	107	SR 2257	FROM SR 1003 TO DEAD END	0.27	16					
11CR.20861.19	Surry	108	SR 2148	FROM SR 2144 TO DEAD END	0.22	20					
11CR.20861.19	Surry	109	SR 2407	FROM SR 2406 TO DEAD END	0.21	20					
11CR.20861.19	Surry	110	SR 1777	FROM NC 89 TO DEAD END	0.2	16					
11CR.20861.19	Surry	111	SR 1533	FROM SR 1350 TO DEAD END	0.19	20					
11CR.20861.19	Surry	112	SR 1629	FROM SR 1628 TO DEAD END	0.13	16					
11CR.20861.19	Surry	113	SR 1526	FROM SR 1310 TO DEAD END	0.11	20					
11CR.20861.19	Surry	114	SR 2424	FROM SR 1682 TO DEAD END	0.11	20					
11CR.20861.19	Surry	115	SR 2109	FROM NC 268 TO DEAD END	0.1	20					
11CR.20861.19	Surry	116	SR 1680	FROM SR 1678 TO EOM	0.07	20					
11CR.20861.19	Surry	117	SR 2435	FROM SR 2415 TO DEAD END	0.06	18					
<b>TOTAL FOR PROJ NO. 11CR.20861.19</b>							<b>548,909</b>	<b>548,909</b>			
<b>GRAND TOTAL</b>							<b>32.19</b>	<b>548,909</b>	<b>548,909</b>		
							<b>1,097,818</b>	<b>1,097,818</b>			

STATE OF NORTH CAROLINA  
DIVISION OF HIGHWAYS  
**SURRY COUNTY**

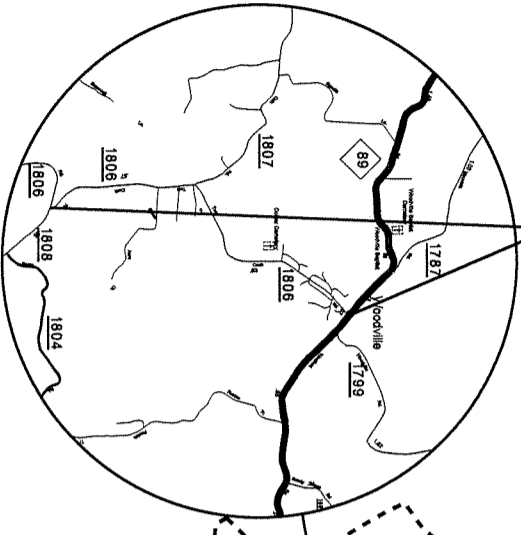
ASPHALT SURFACE TREATMENT



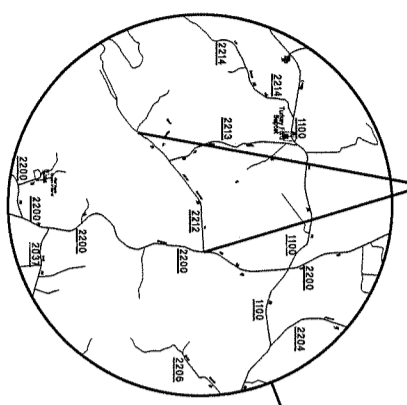
MAP # 64 SR 1387  
FROM SR 1389 TO SR 1376



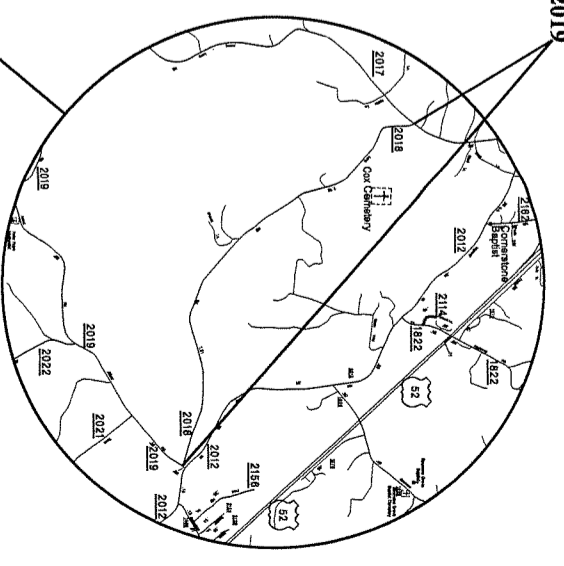
MAP # 68 SR 1806  
FROM NC 89 TO SR 1808



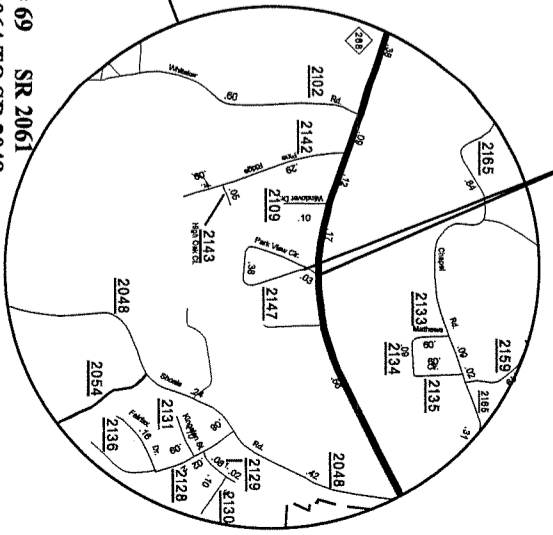
MAP # 66 SR 2212  
FROM SR 2200  
TO DEAD END



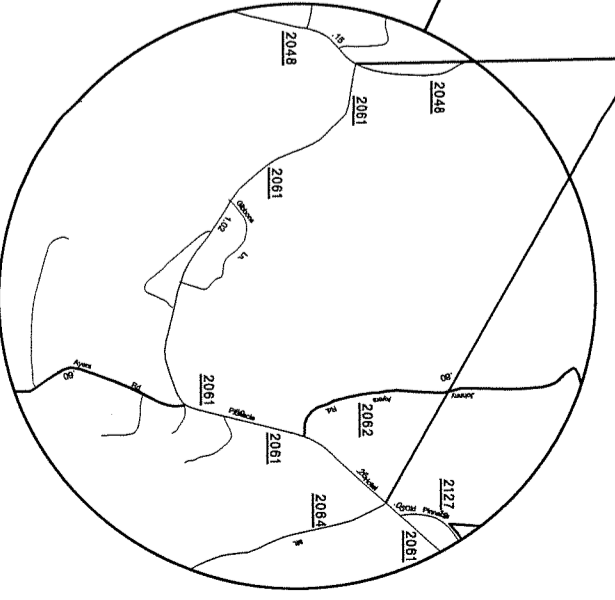
MAP # 63 SR 2018  
FROM SR 2017 TO SR 2019



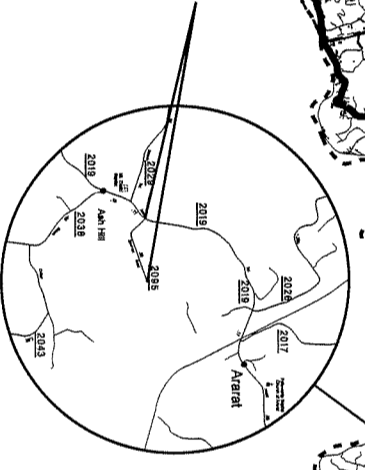
MAP # 65 SR 2147  
FROM NC 268 TO SR 2147



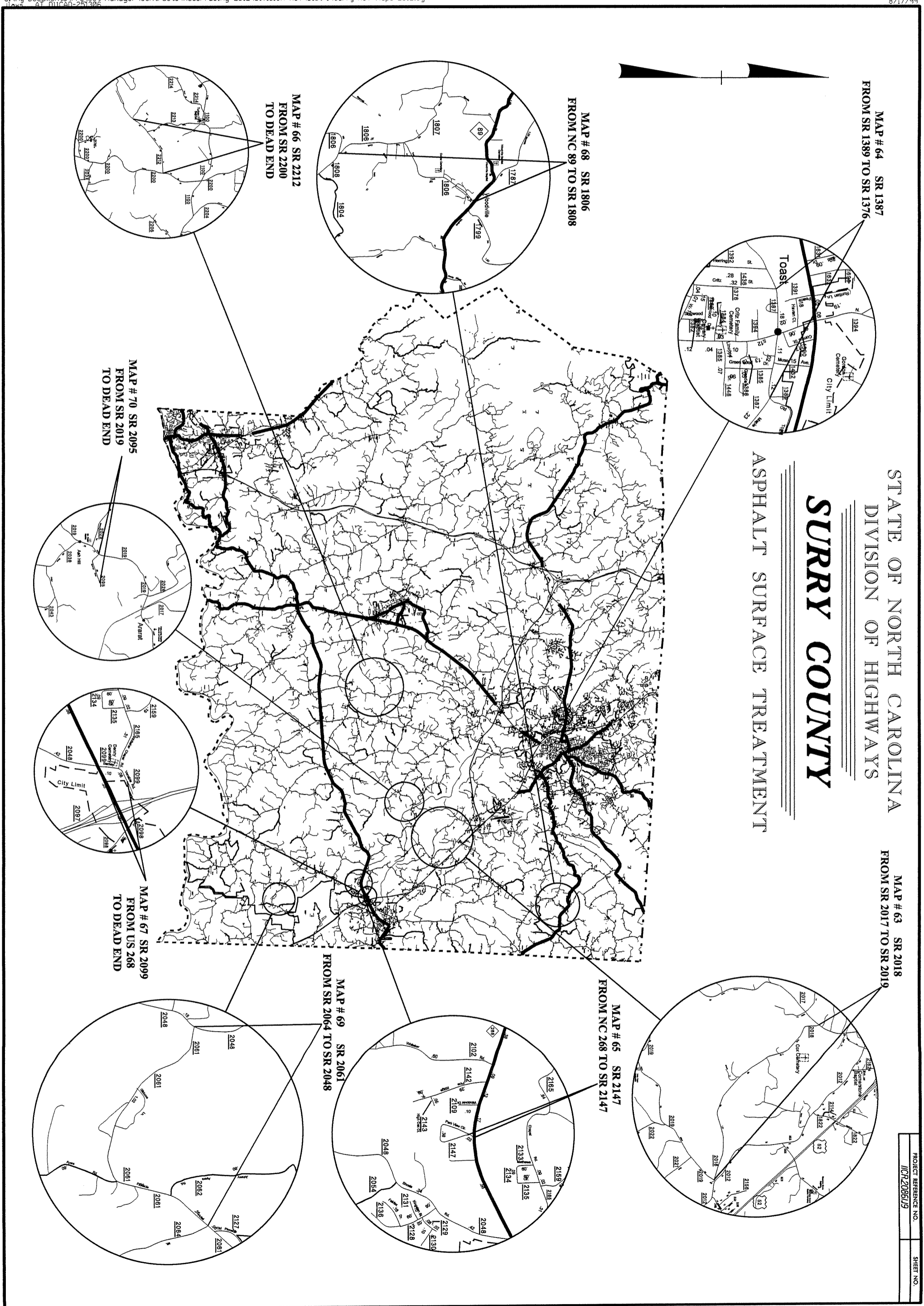
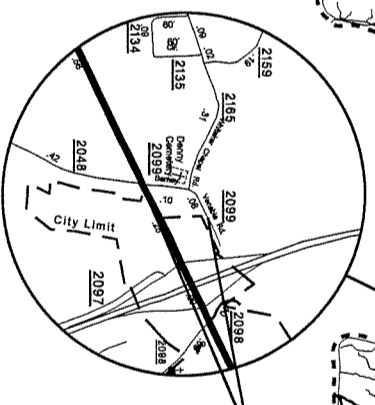
MAP # 69 SR 2061  
FROM SR 2064 TO SR 2048



MAP # 70 SR 2095  
FROM SR 2019  
TO DEAD END

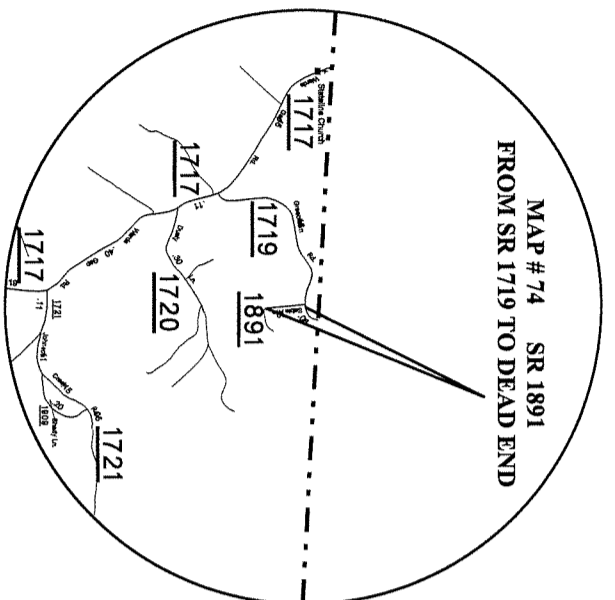
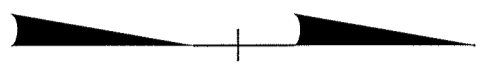


MAP # 67 SR 2099  
FROM US 268  
TO DEAD END

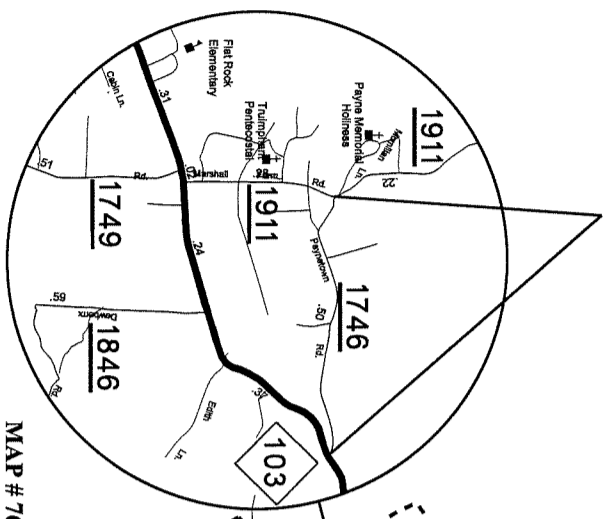


STATE OF NORTH CAROLINA  
DIVISION OF HIGHWAYS  
**SURRY COUNTY**

ASPHALT SURFACE TREATMENT

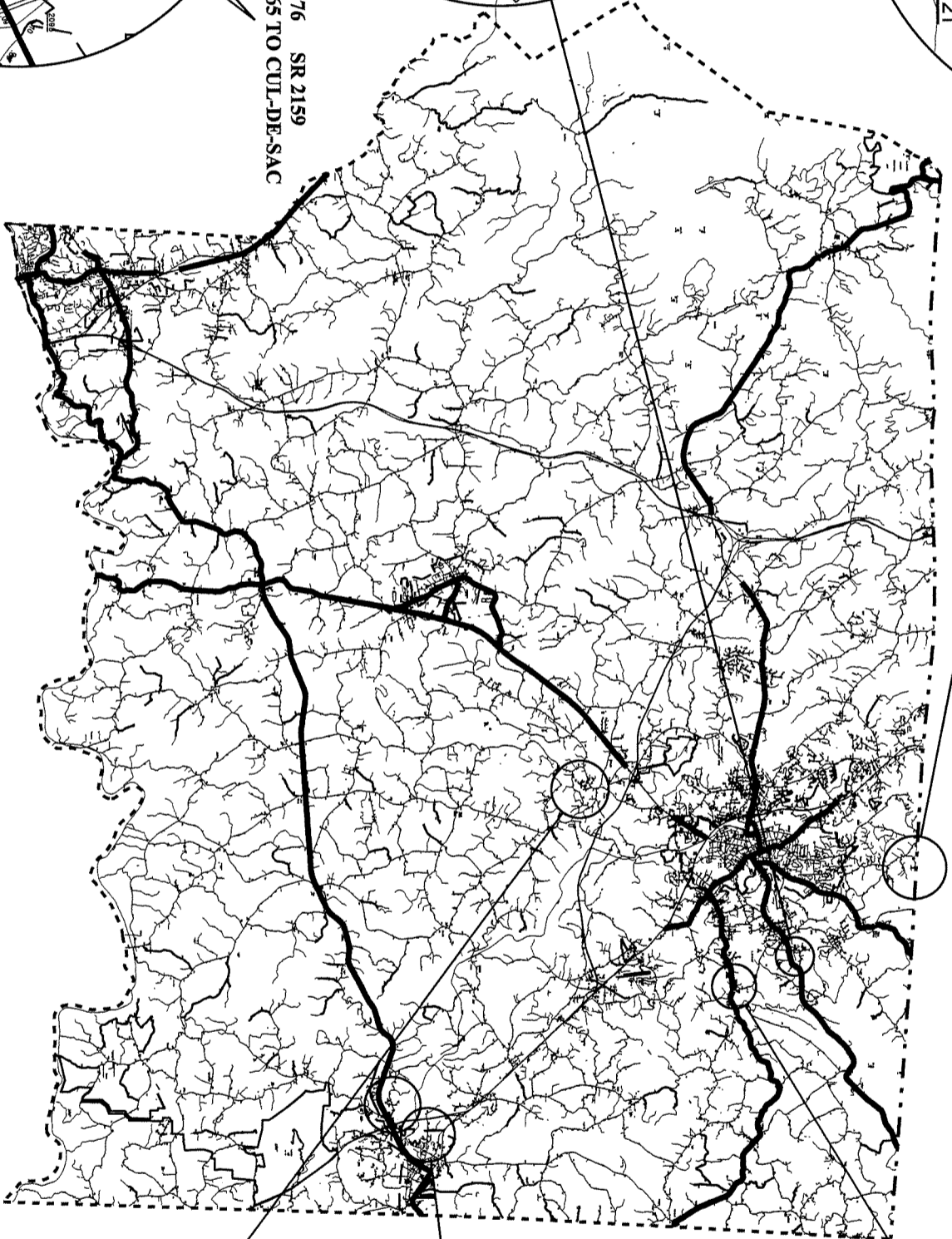
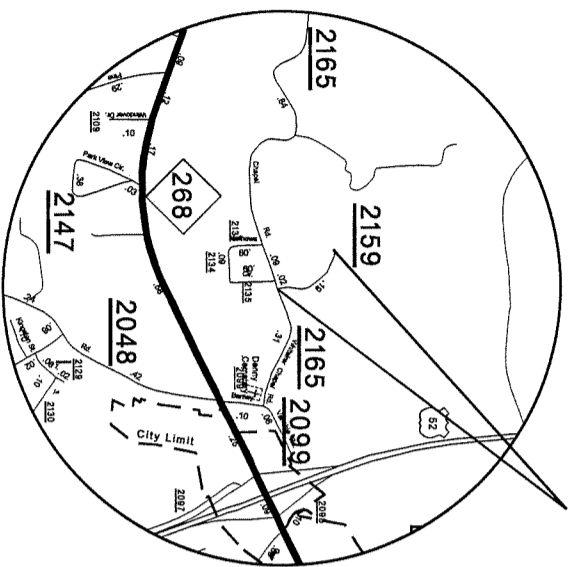


MAP # 74 SR 1891  
FROM SR 1719 TO DEAD END

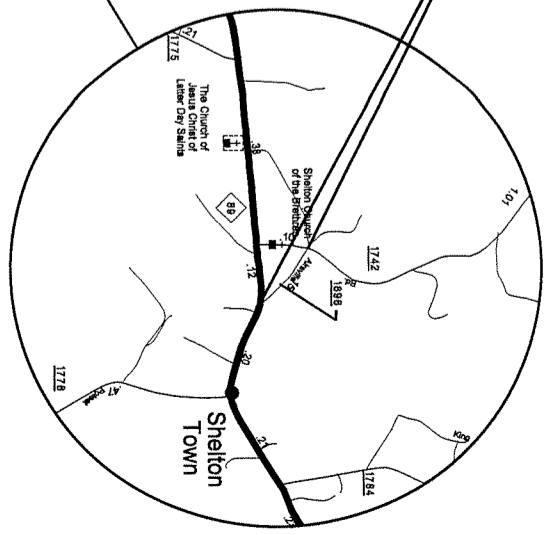


MAP # 75 SR 1746  
FROM NC 103 TO SR 1911

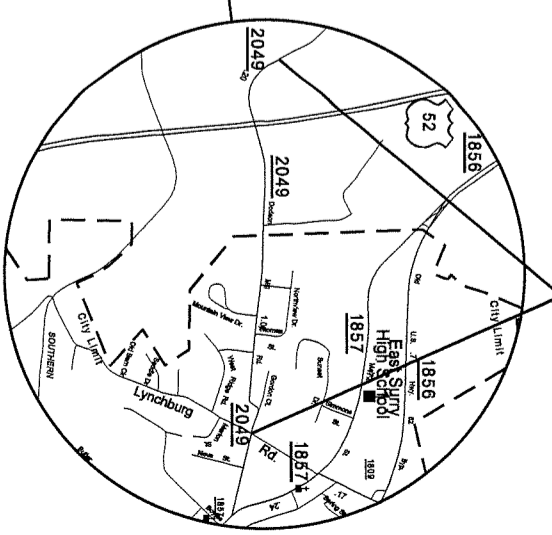
MAP # 76 SR 2159  
FROM SR 2165 TO CUL-DE-SAC



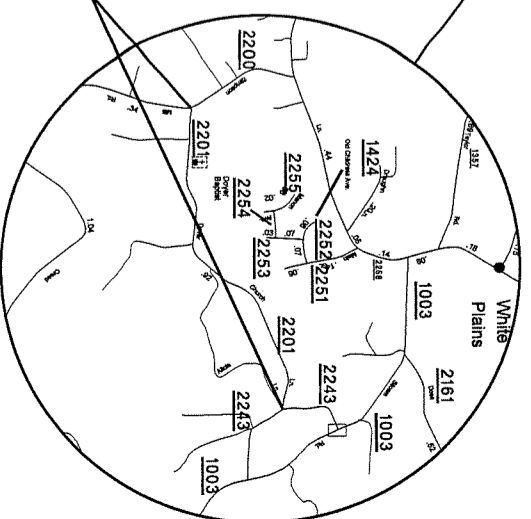
MAP # 71 SR 1896  
FROM NC 89 TO SR 1742



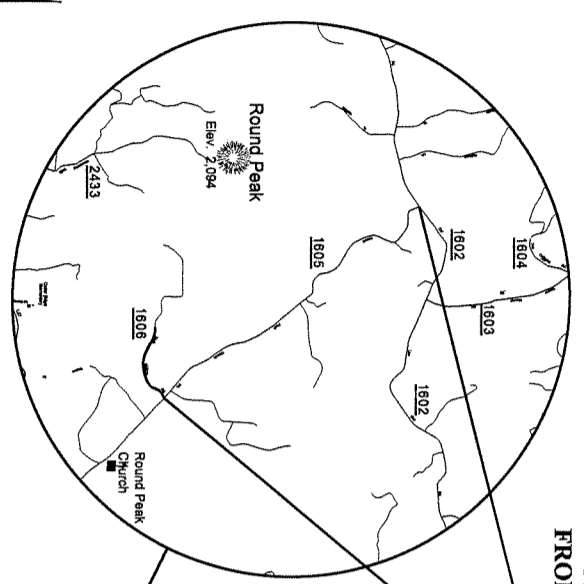
MAP # 73 SR 2049  
FROM LYNCHBURG RD.  
TO END MAINTENANCE



MAP # 72 SR 2201  
FROM SR 2200 TO SR 2243



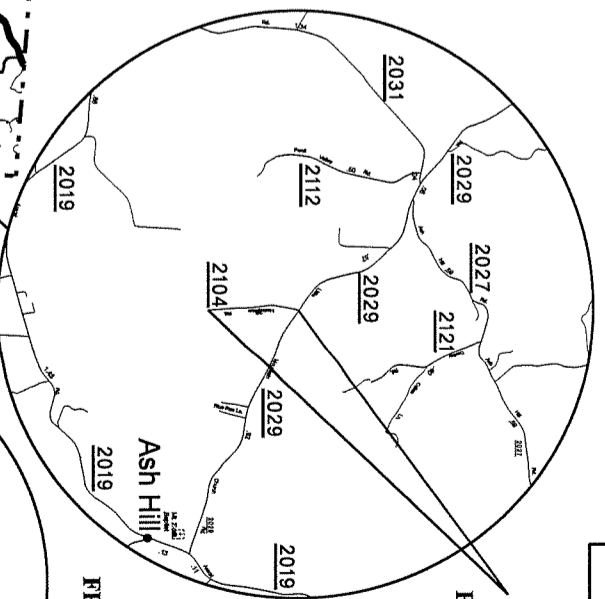
MAP # 80 SR 1605  
FROM SR 1606 TO SR 1602



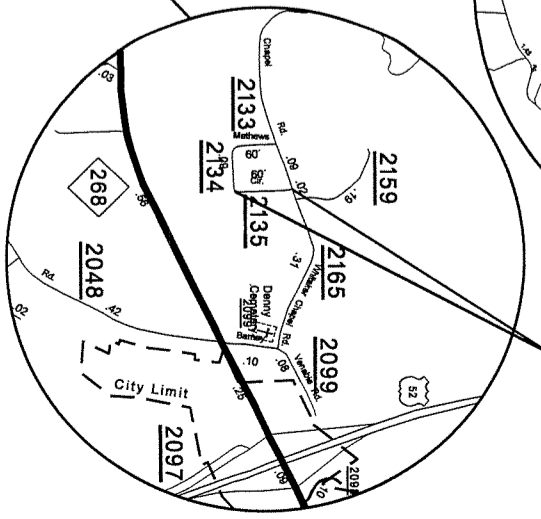
STATE OF NORTH CAROLINA  
DIVISION OF HIGHWAYS  
**SURRY COUNTY**

ASPHALT SURFACE TREATMENT

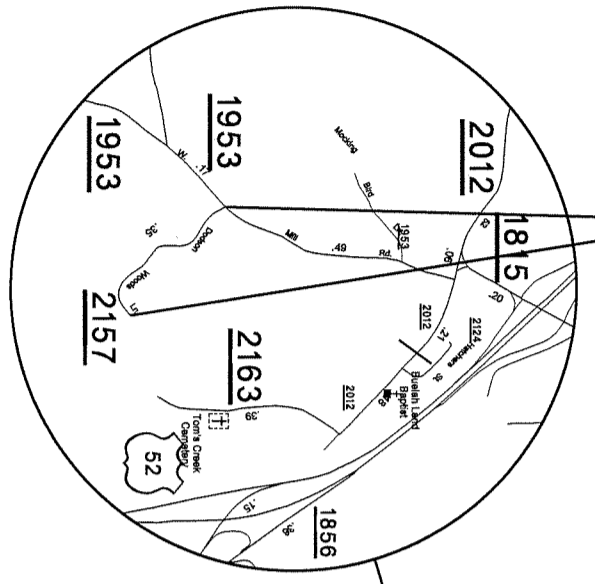
MAP # 78 SR 2104  
FROM SR 2029 TO  
END MAINTENANCE



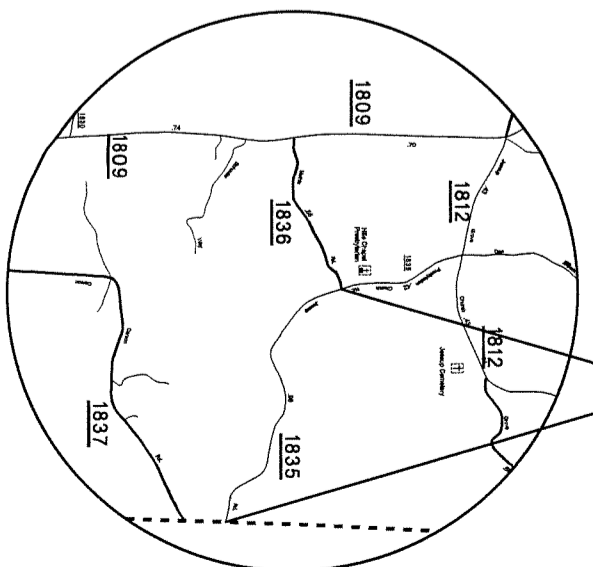
MAP # 79 SR 2135  
FROM SR 2165 TO SR 2134



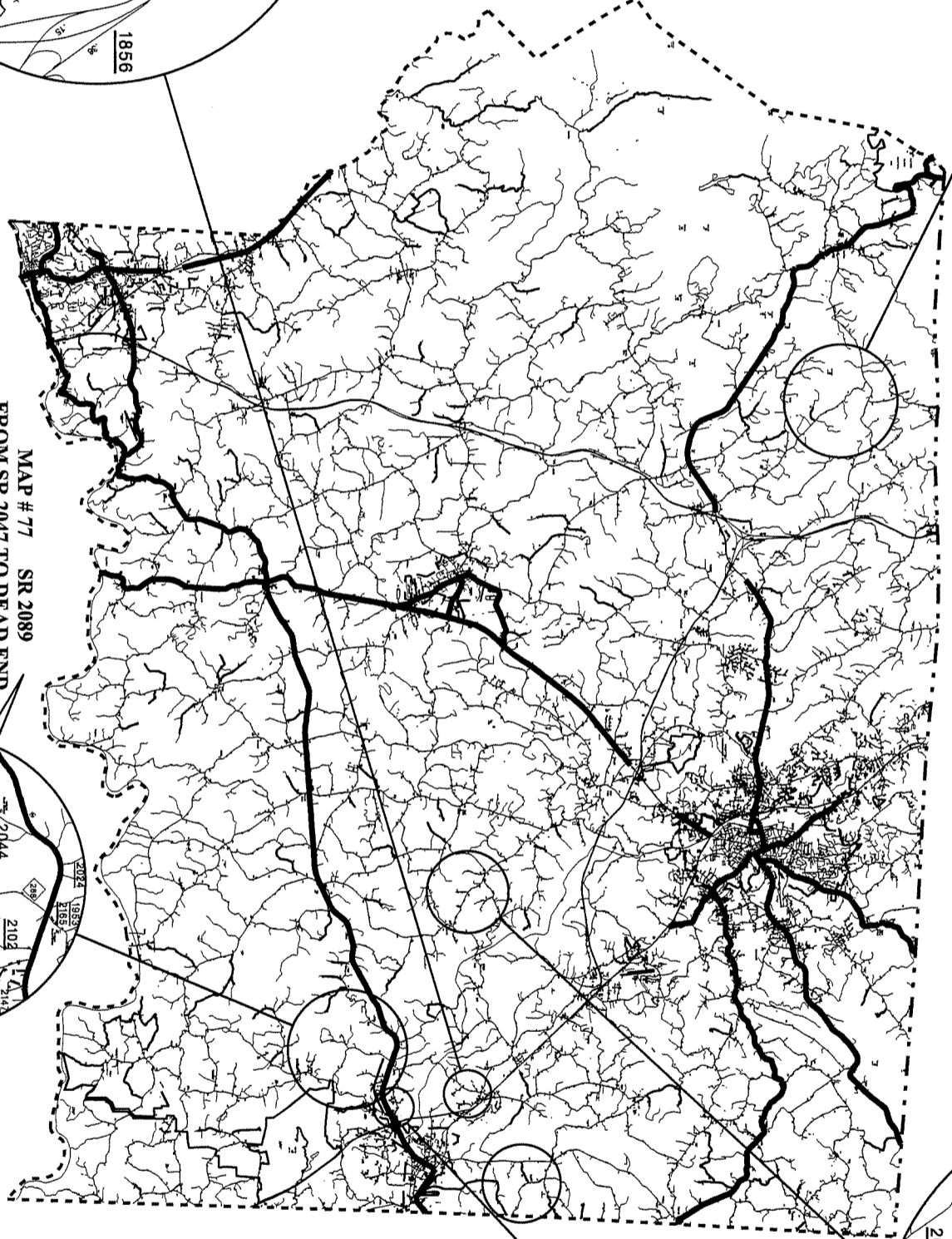
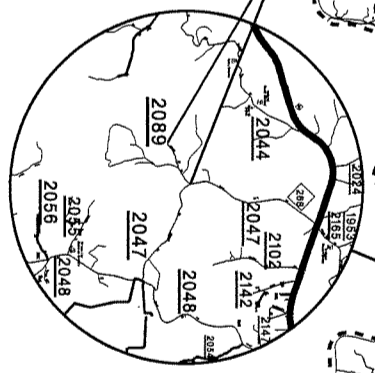
MAP # 81 SR 2157  
FROM SR 1953 TO CUL-DE-SAC



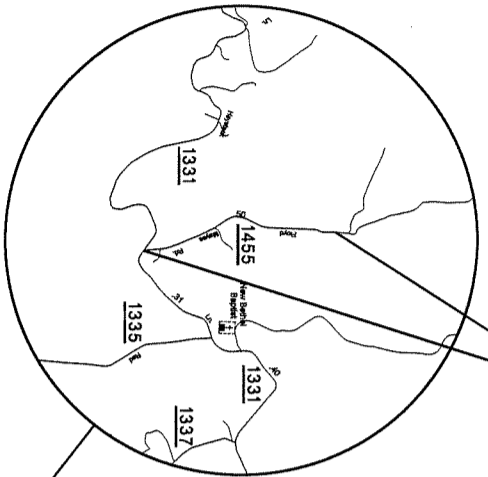
MAP # 82 SR 1835  
FROM SR 1836 TO  
STOKES COUNTY LINE



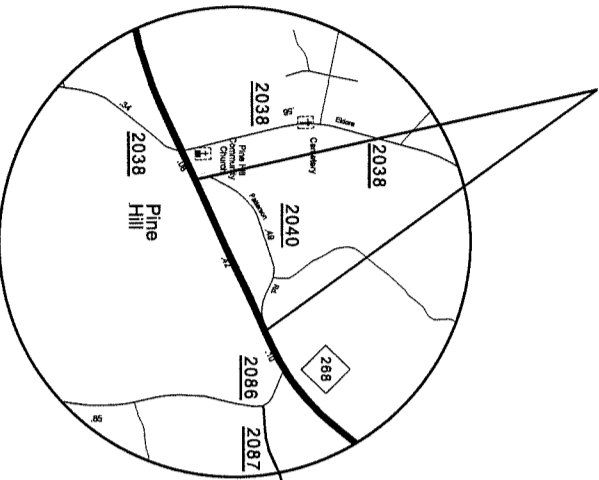
MAP # 77 SR 2089  
FROM SR 2047 TO DEAD END



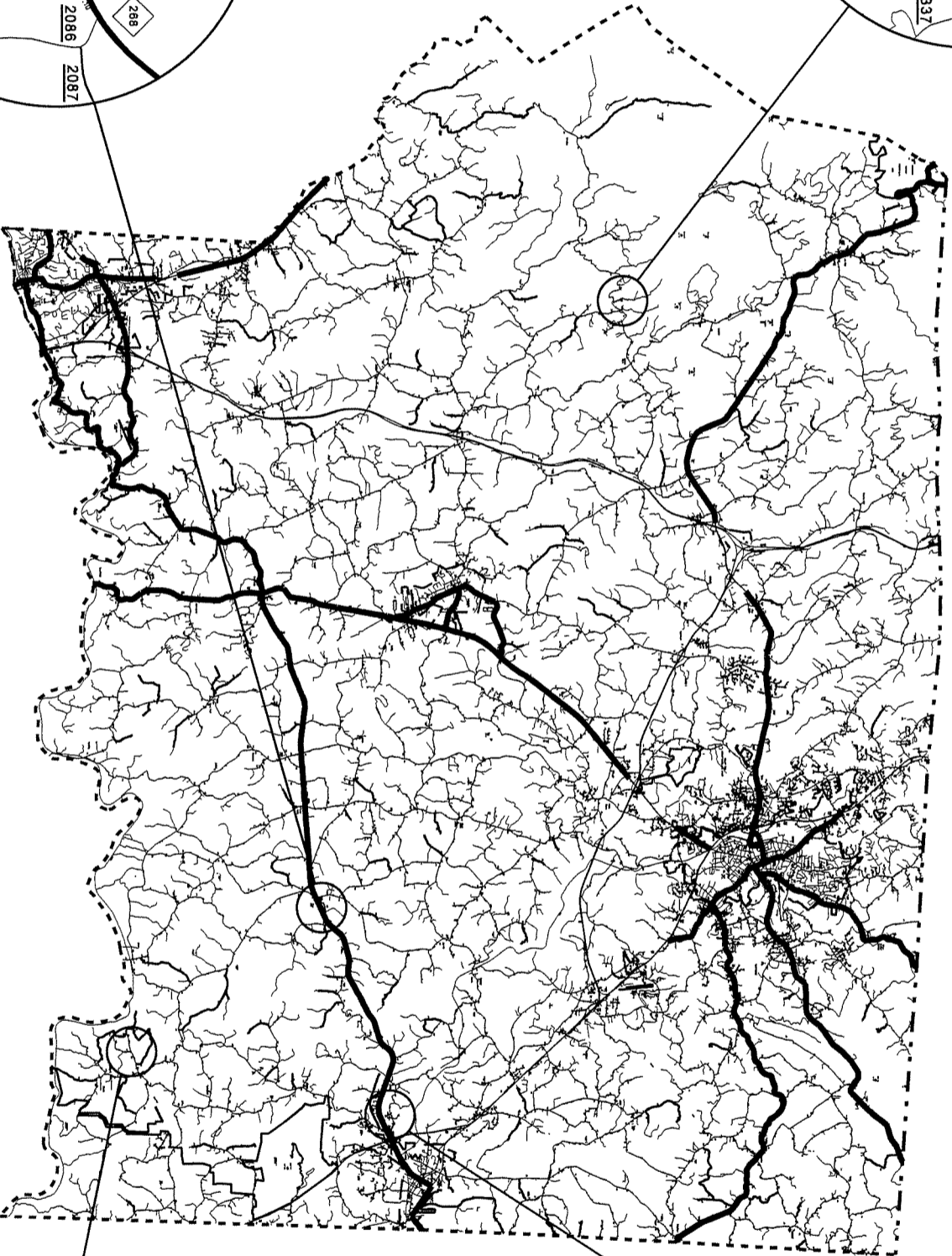
MAP #84 SR 1455  
FROM SR 1331 TO  
END MAINTENANCE



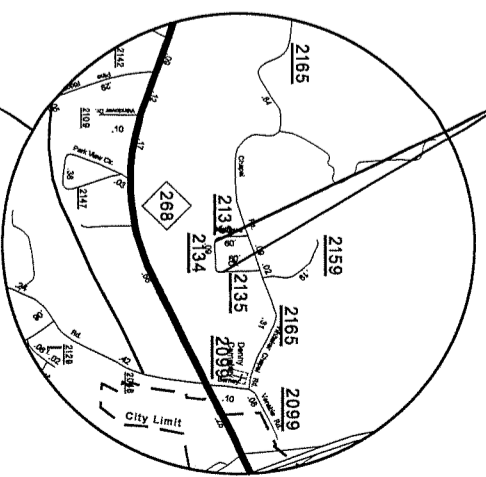
MAP #83 SR 2040  
FROM NC 268 TO NC 268



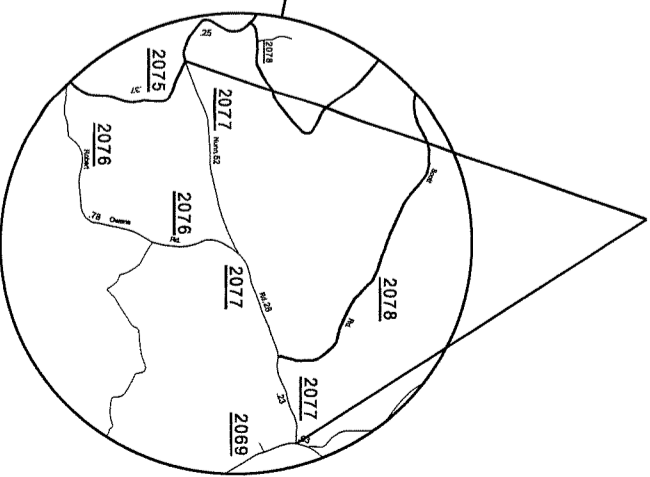
STATE OF NORTH CAROLINA  
DIVISION OF HIGHWAYS  
**SURRY COUNTY**  
ASPHALT SURFACE TREATMENT



MAP #85 SR 2134  
FROM SR 2135 TO SR 2133

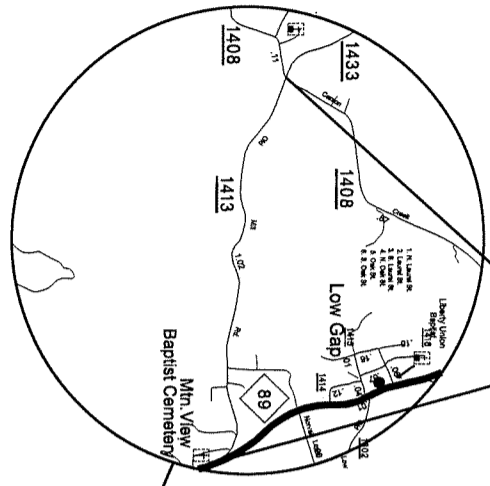


MAP #86 SR 2077  
FROM SR 2069 TO SR 2075

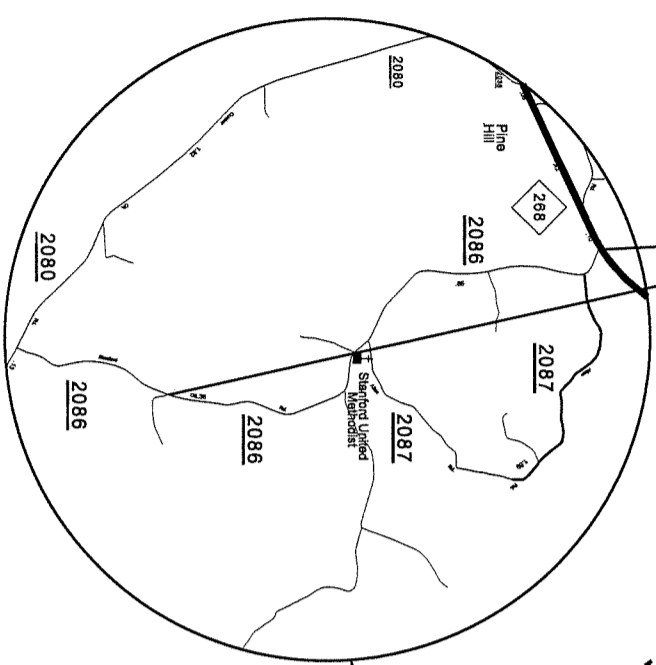




MAP #87 SR 1413  
FROM NC 89 TO SR 1408

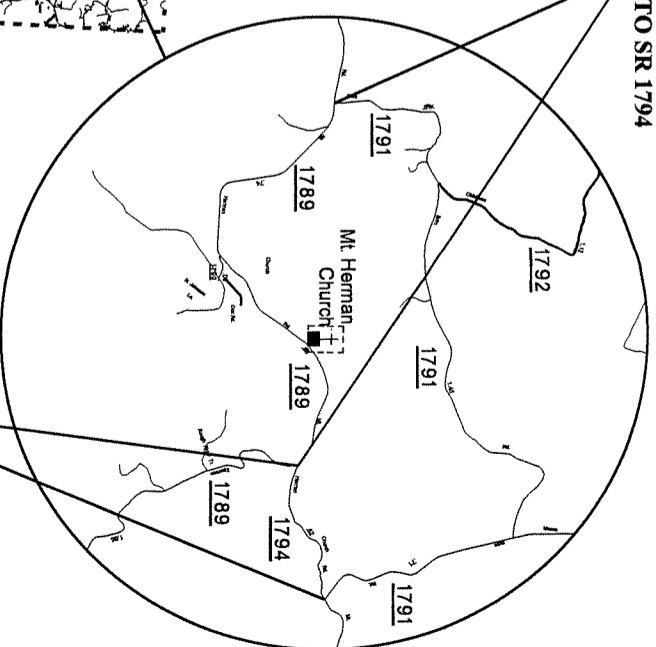


MAP #92 SR 2086  
FROM NC 268 TO PVMT CHANGE



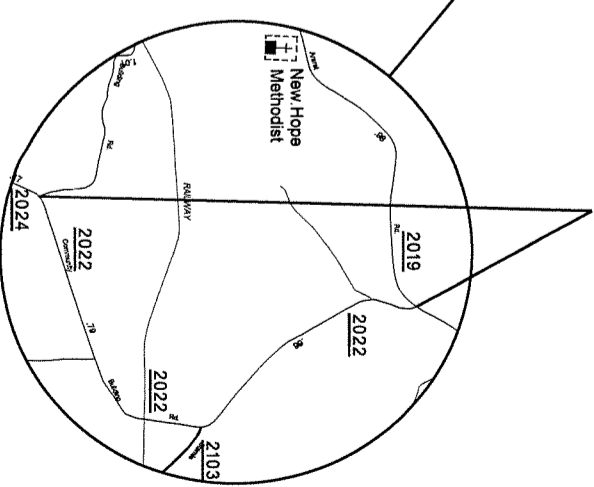
STATE OF NORTH CAROLINA  
DIVISION OF HIGHWAYS  
**SURRY COUNTY**  
ASPHALT SURFACE TREATMENT

MAP #88 SR 1789  
FROM SR 1791 TO SR 1794

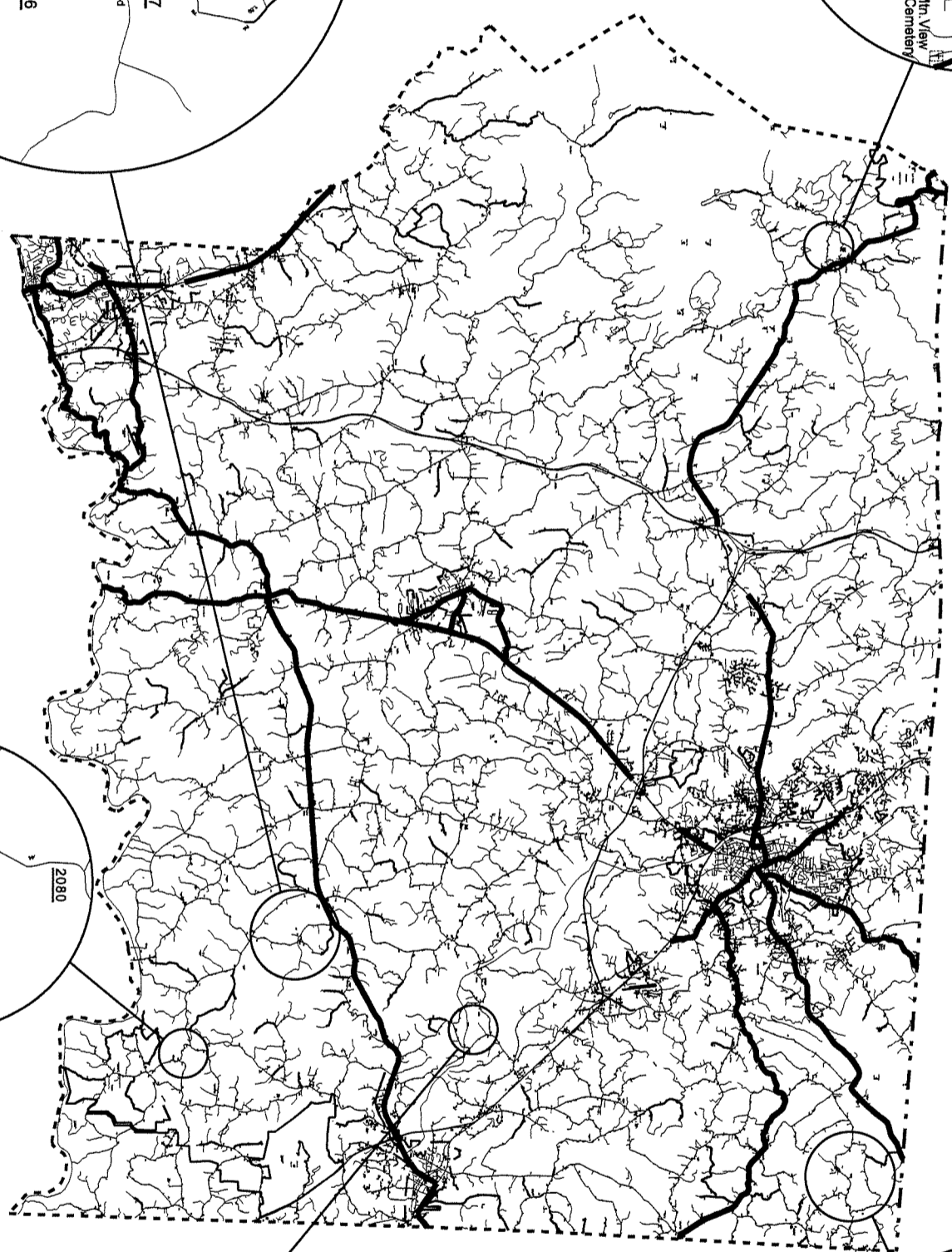
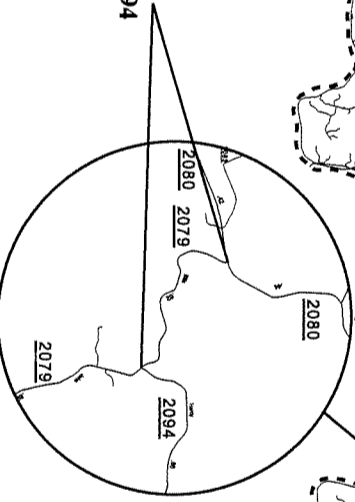


MAP #89 SR 1794  
FROM SR 1789 TO SR 1791

MAP #90 SR 2022  
FROM SR 2024 TO SR 2019



MAP #91 SR 2079  
FROM SR 2080 TO SR 2094

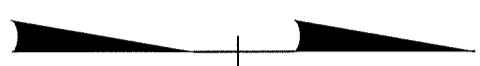


PROJECT REFERENCE NO.	SHEET NO.
ICR 208619	

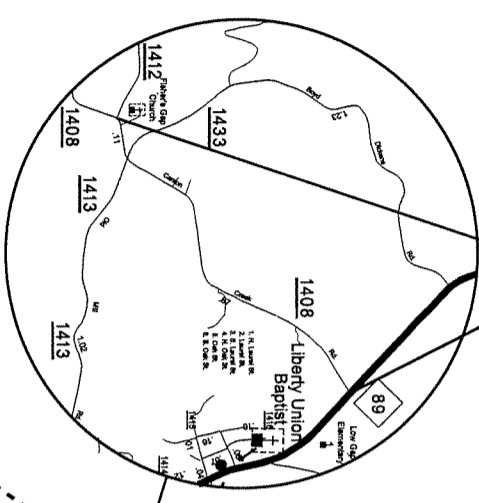
STATE OF NORTH CAROLINA  
DIVISION OF HIGHWAYS

**SURRY COUNTY**

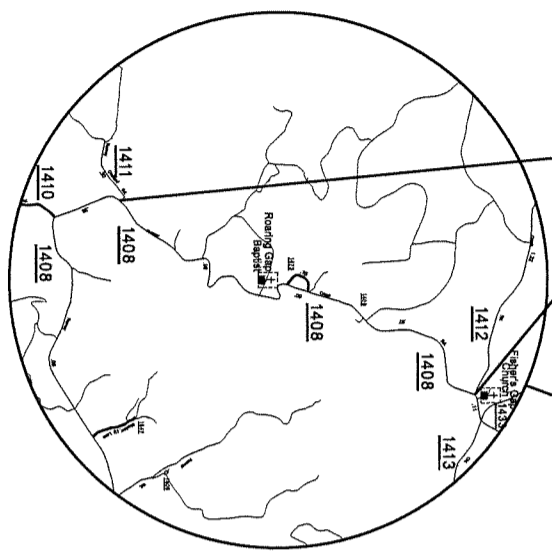
ASPHALT SURFACE TREATMENT



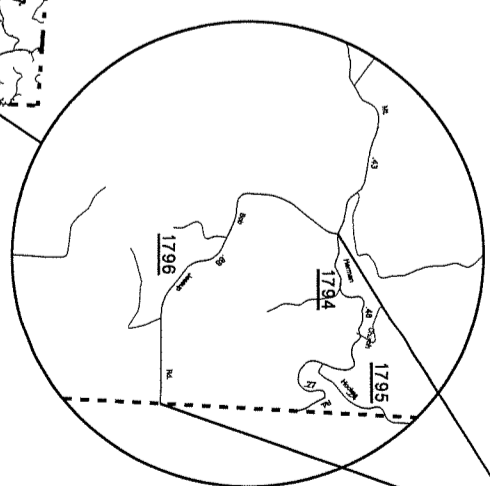
MAP #97 SR 1408  
FROM NC 89 TO SR 1412



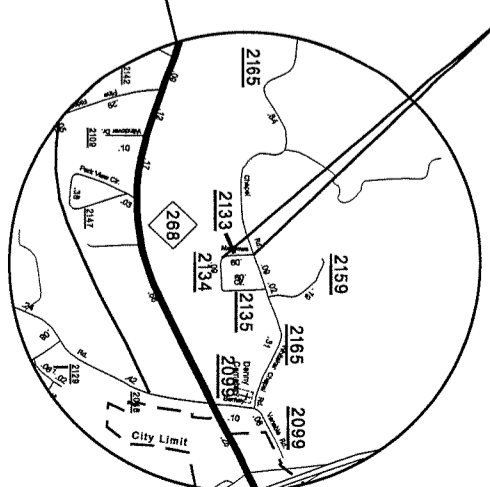
MAP #93 SR 1408  
FROM SR 1412 TO SR 1411



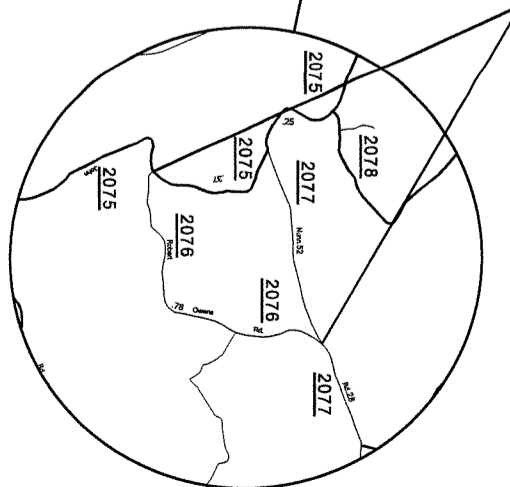
MAP #96 SR 1796  
FROM SR 1794 TO STOKES CO LINE



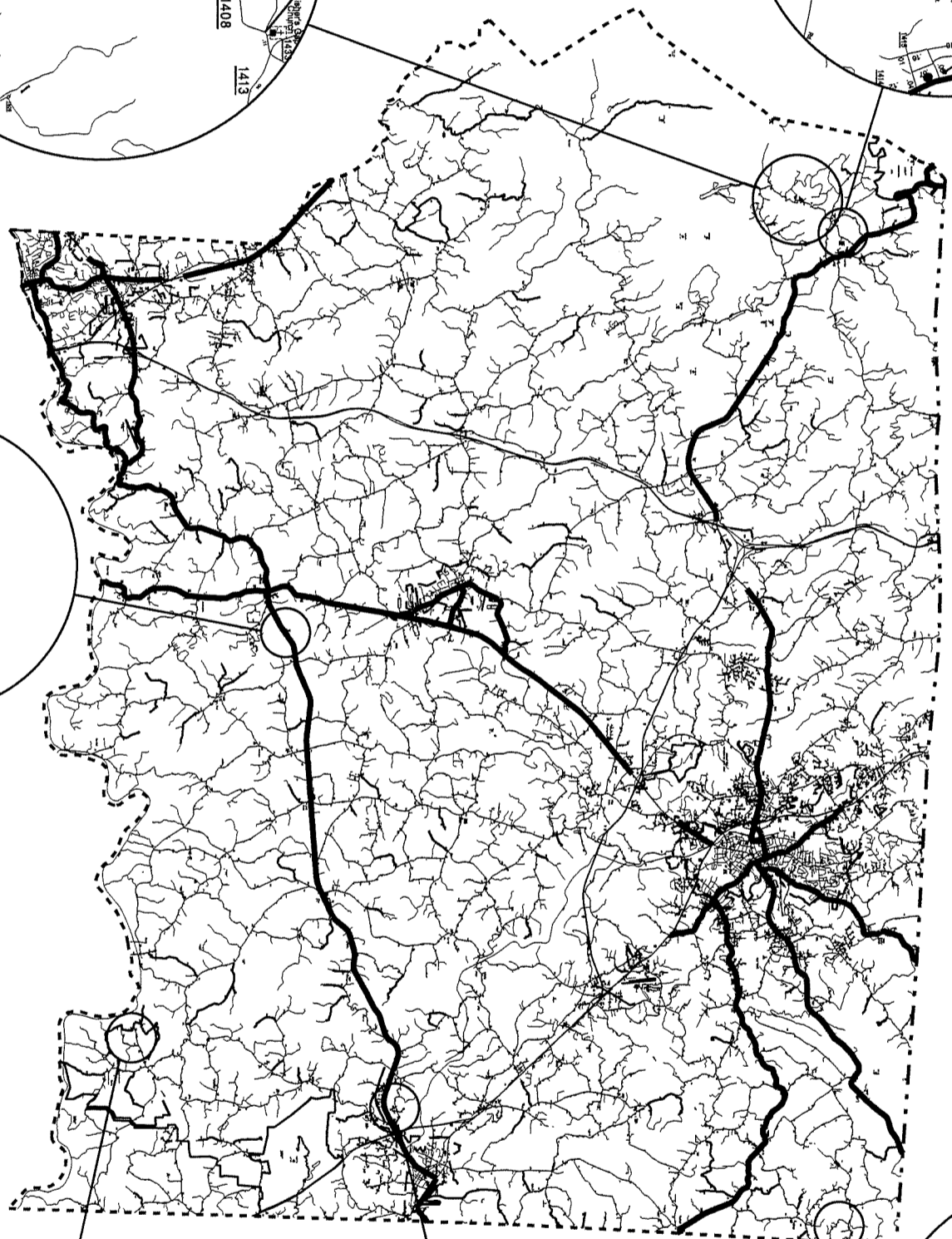
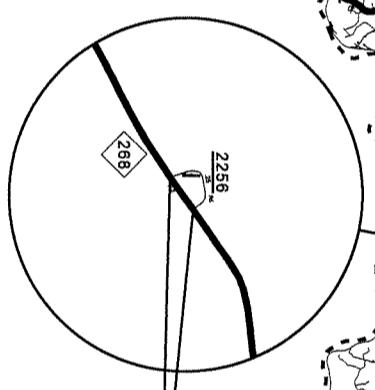
MAP #94 SR 2133  
FROM SR 2165 TO SR 2134



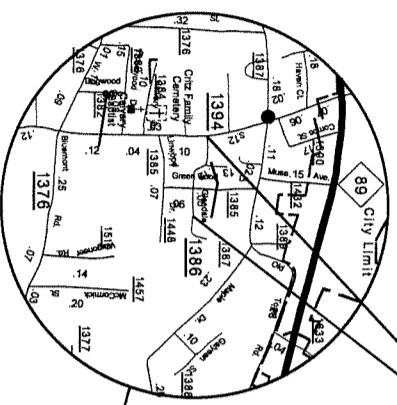
MAP #95 SR 2076  
FROM SR 2075 TO SR 2077



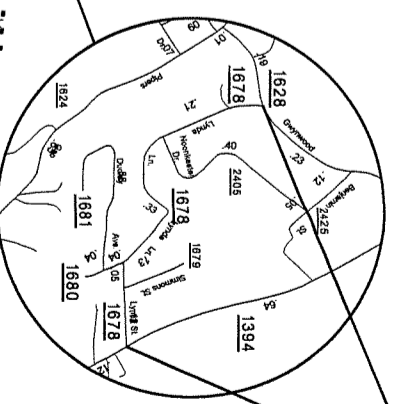
MAP #98 SR 2256  
FROM NC 268 TO NC 268



MAP #104 SR 1386  
FROM SR 1394 TO DEAD END

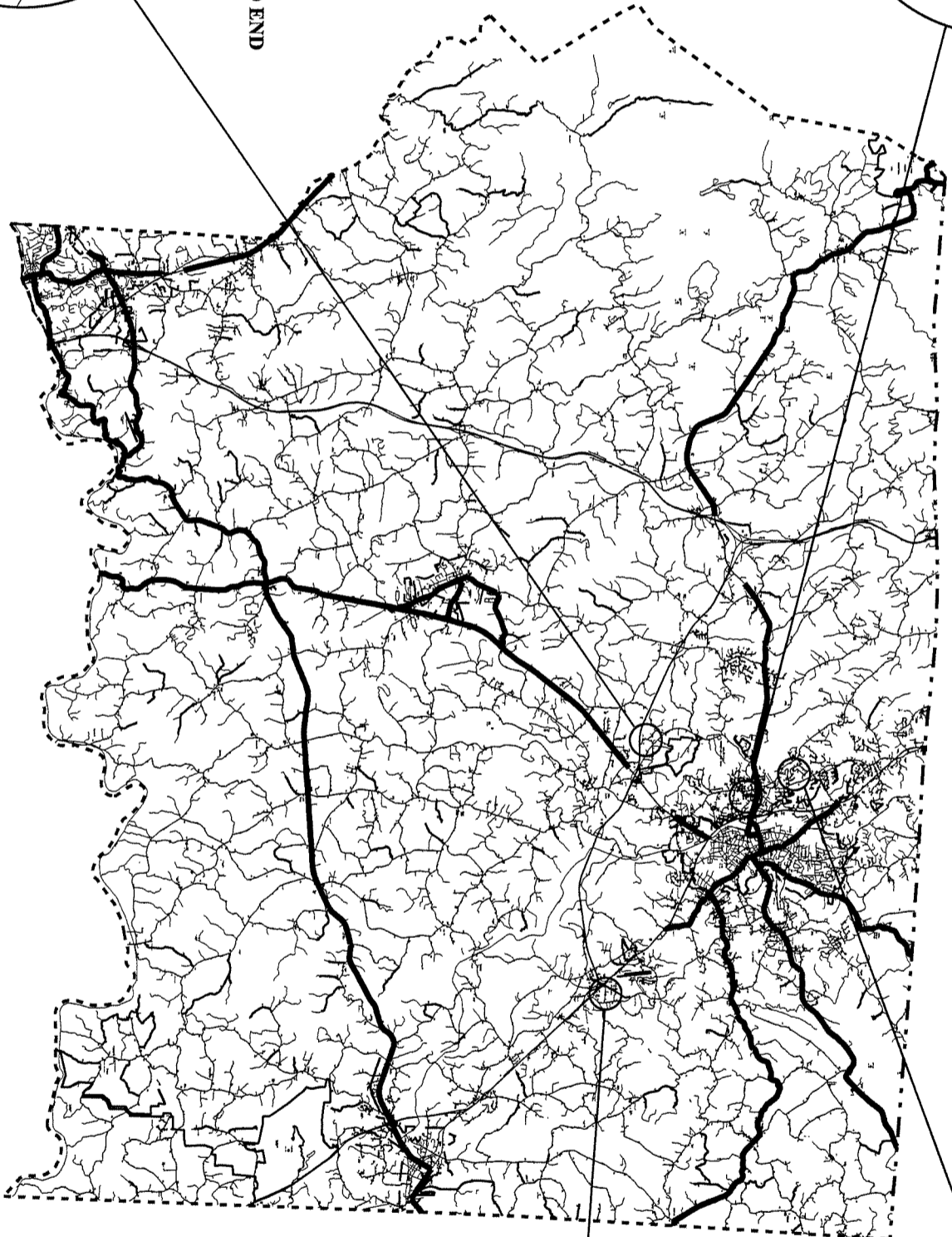


MAP #99 SR 1678  
FROM SR 1394 TO SR 1628

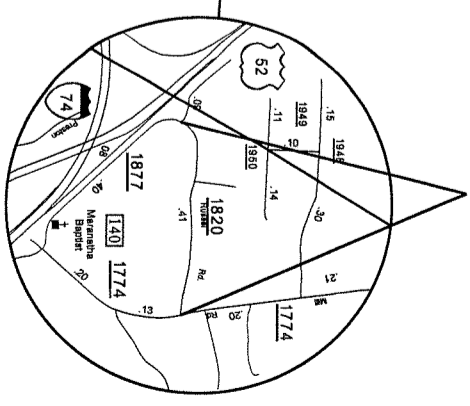


STATE OF NORTH CAROLINA  
DIVISION OF HIGHWAYS  
**SURRY COUNTY**

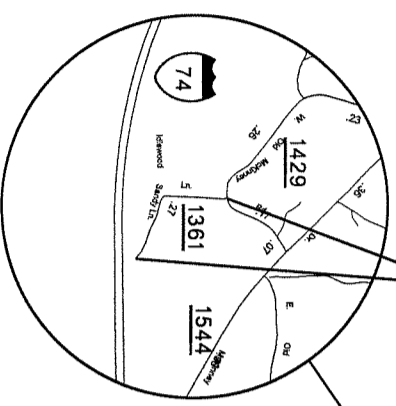
ASPHALT SURFACE TREATMENT



MAP #100 SR 1820  
FROM SR 1774 TO SR 1877



MAP #103 SR 1361  
FROM SR 1429 TO DEAD END

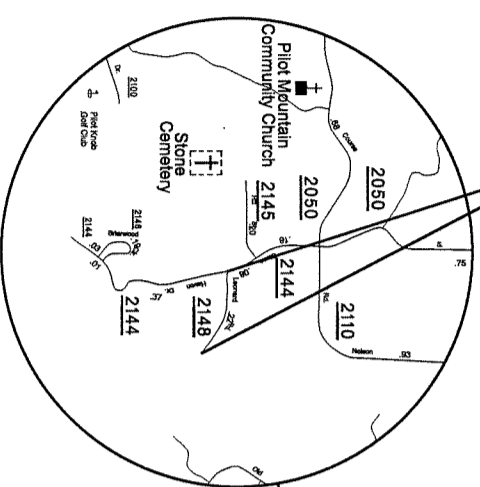
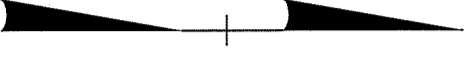


STATE OF NORTH CAROLINA

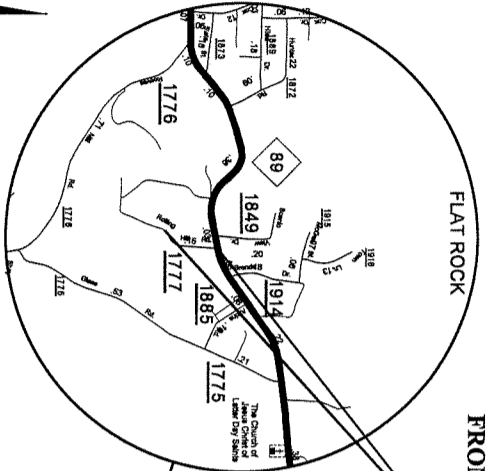
DIVISION OF HIGHWAYS

**SURRY COUNTY**

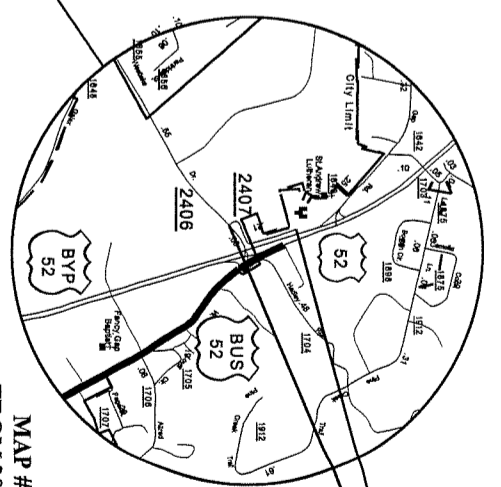
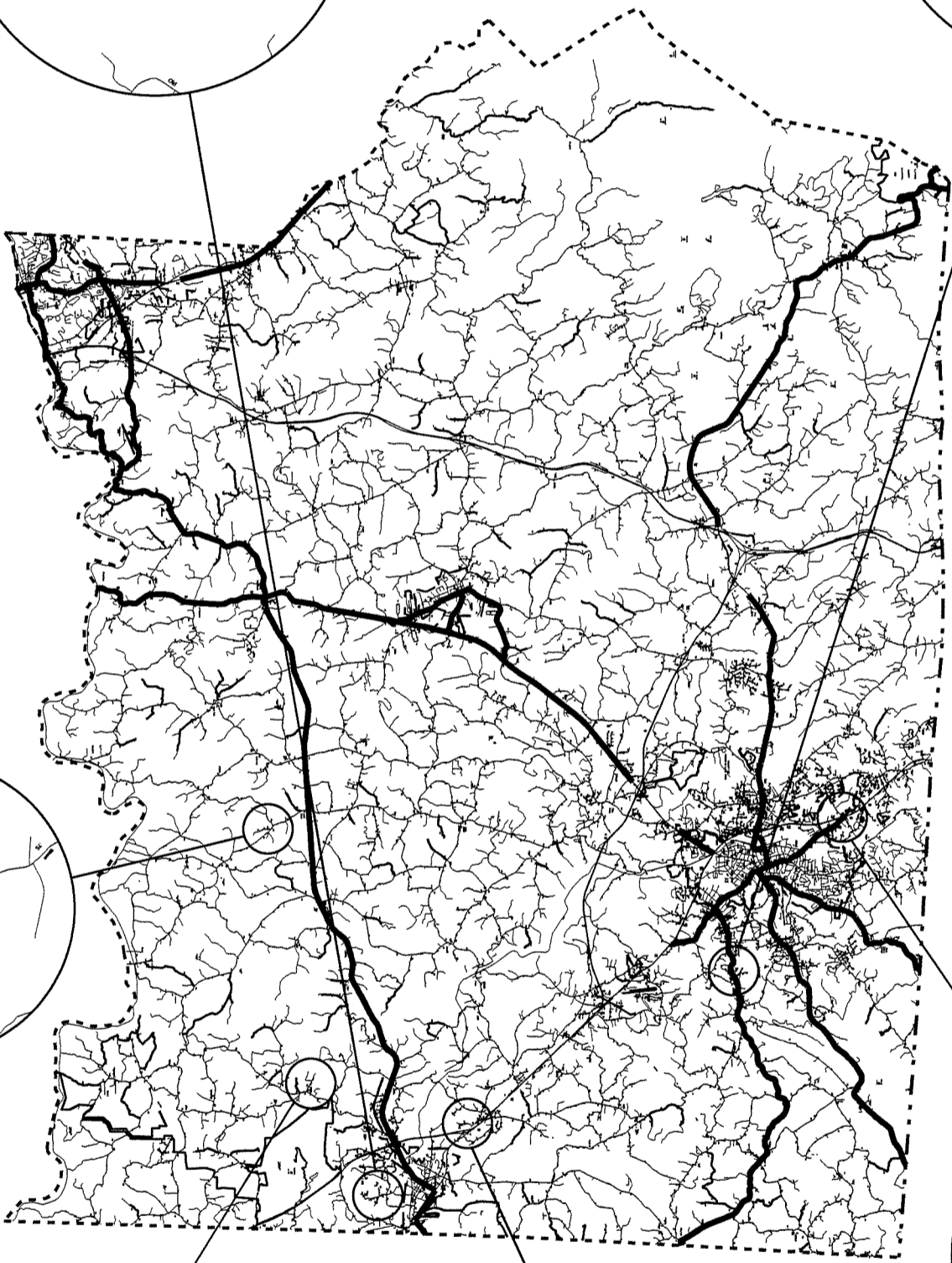
ASPHALT SURFACE TREATMENT



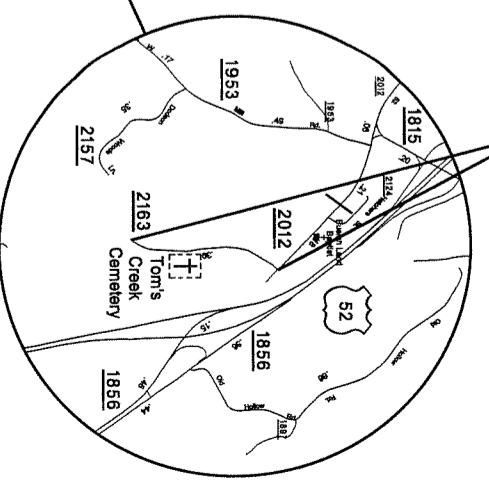
MAP #108 SR 2148  
FROM SR 2144 TO DEAD END



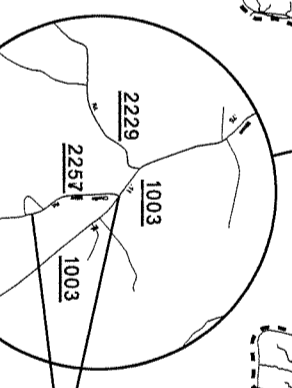
MAP #110 SR 1777  
FROM NC 89 TO DEAD END



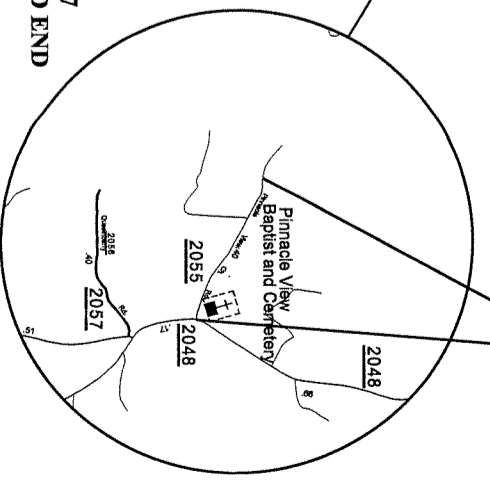
MAP #109 SR 2407  
FROM 2406 TO DEAD END



MAP #106 SR 2163  
FROM 2012 TO DEAD END



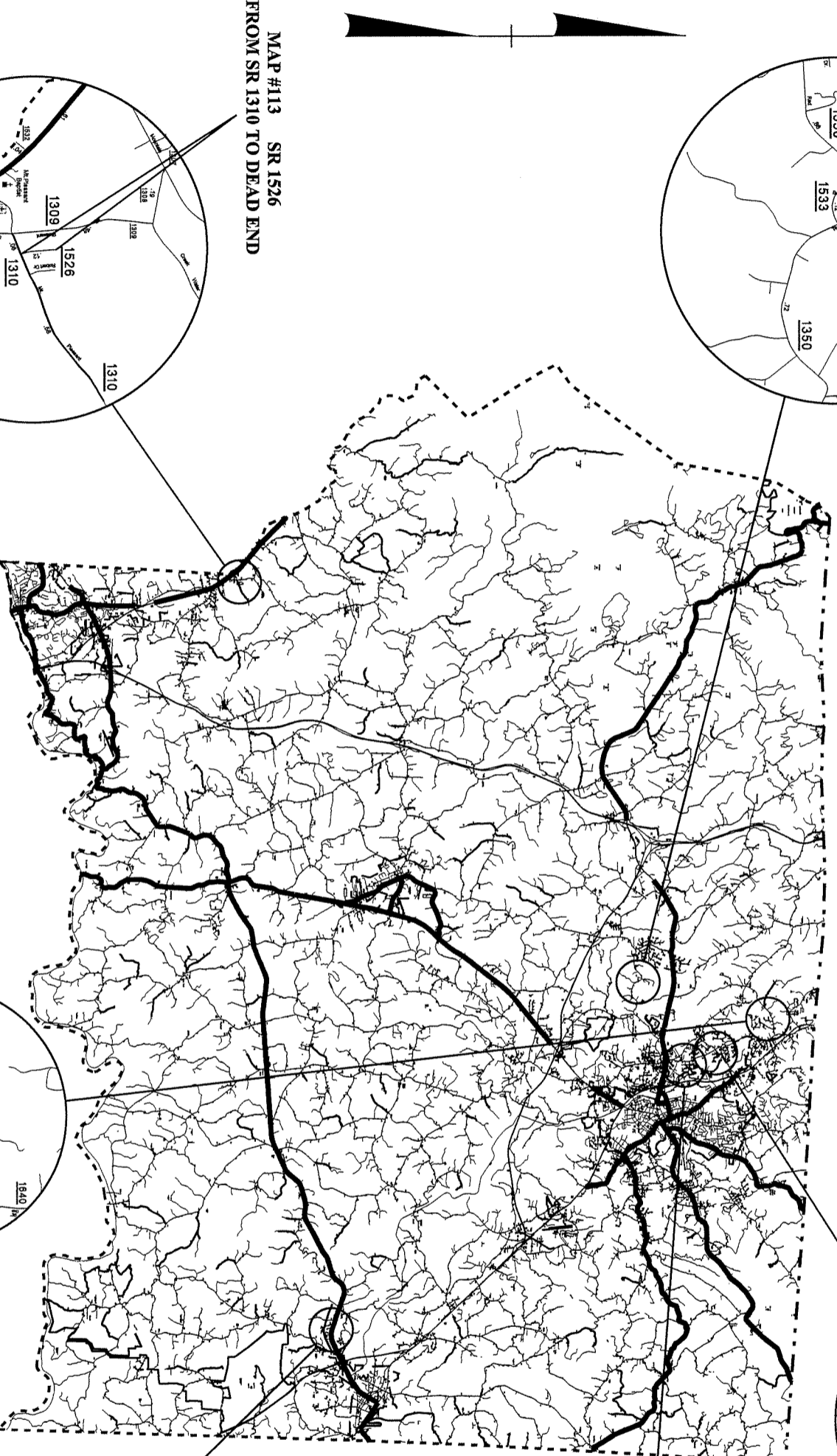
MAP #107 SR 2257  
FROM SR 1003 TO DEAD END



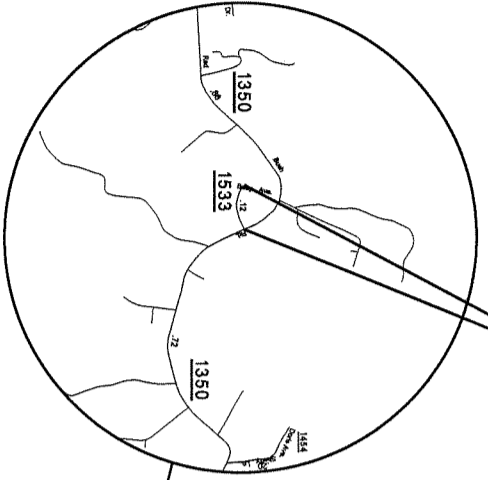
MAP #105 SR 2055  
FROM SR 2048 TO DEAD END

STATE OF NORTH CAROLINA  
DIVISION OF HIGHWAYS  
**SURRY COUNTY**

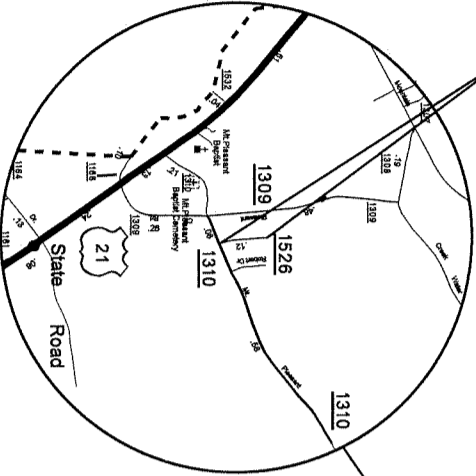
ASPHALT SURFACE TREATMENT



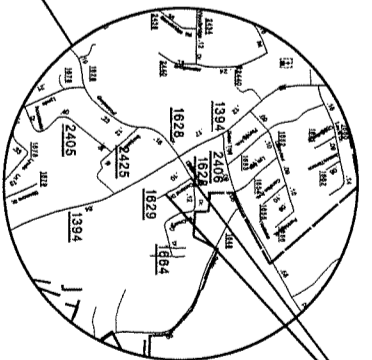
MAP #111 SR 1533  
FROM SR 1350 TO DEAD END



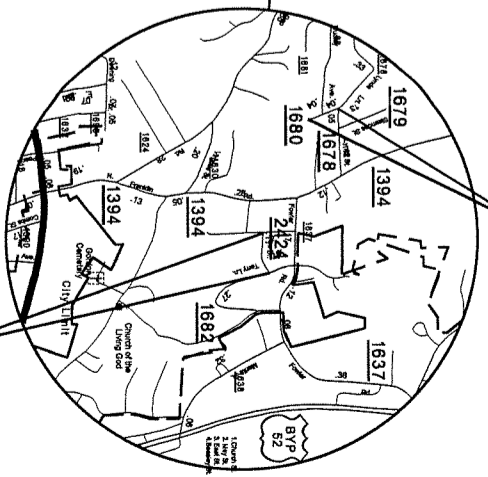
MAP #113 SR 1526  
FROM SR 1310 TO DEAD END



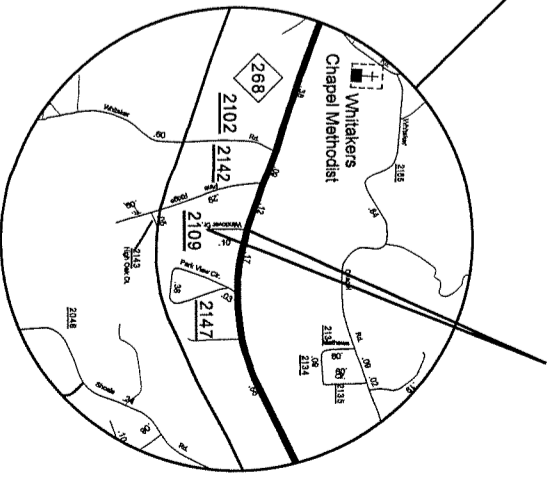
MAP #112 SR 1629  
FROM SR 1628 TO DEAD END



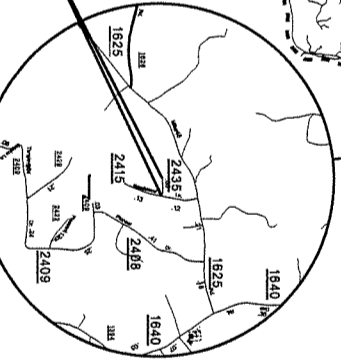
MAP #116 SR 1680  
FROM SR 1678 TO  
END MAINTENANCE



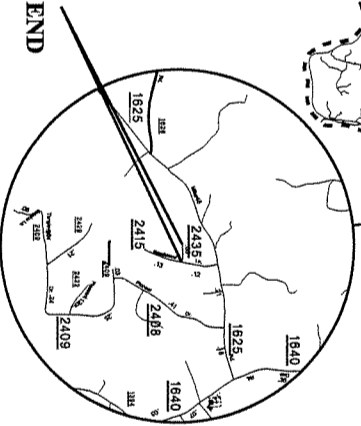
MAP #114 SR 2424  
FROM SR 1682 TO DEAD END

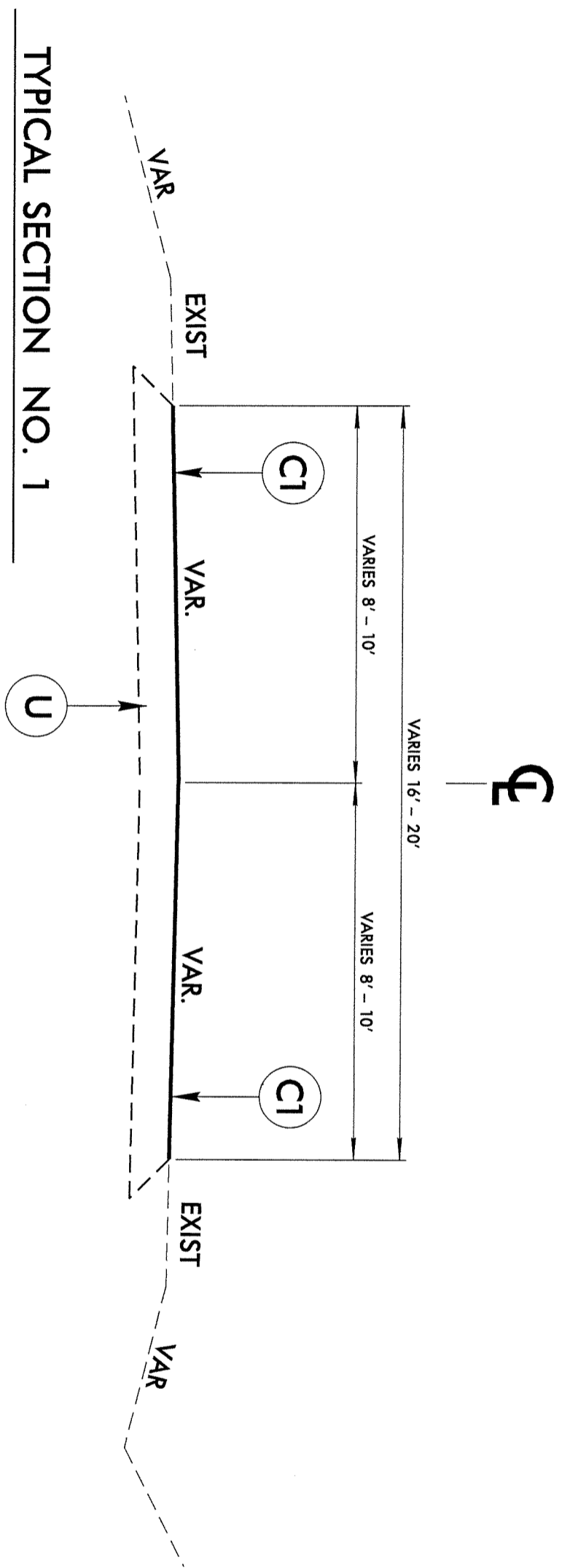


MAP #115 SR 2109  
FROM NC 268 TO DEAD END

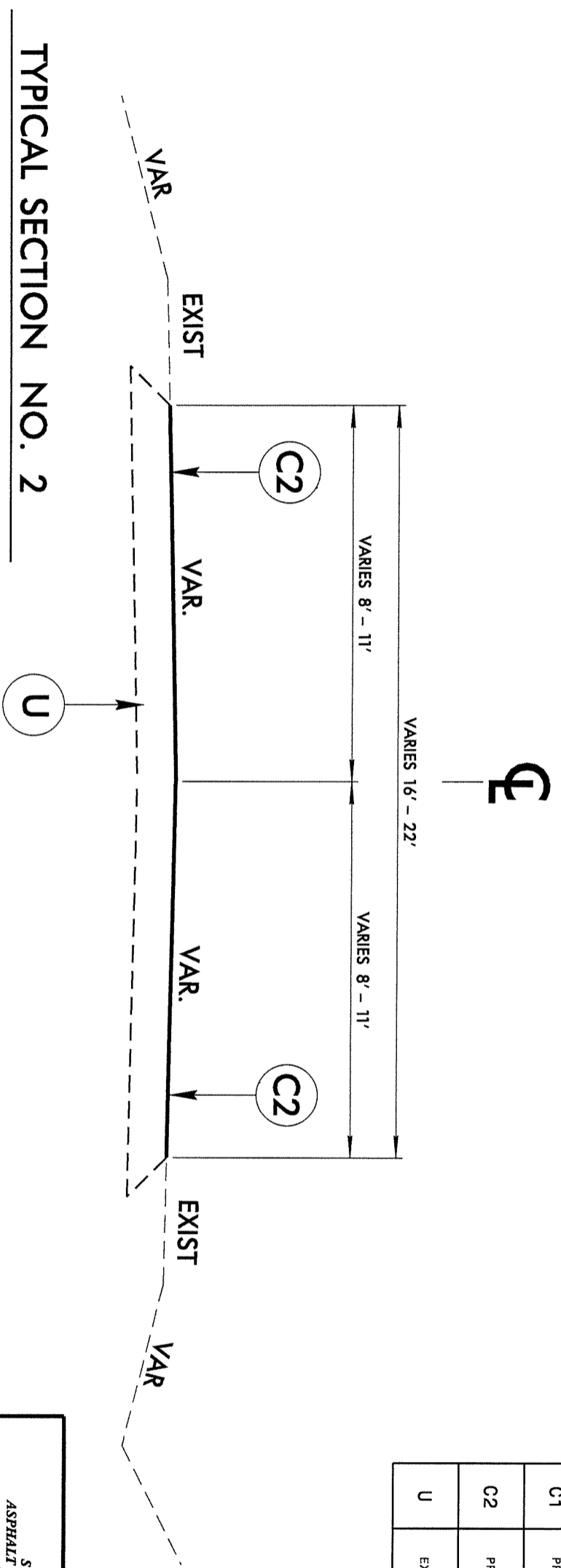


MAP #117 SR 2435  
FROM SR 2415 TO DEAD END





PAVEMENT SCHEDULE	
C1	PROP. ASPHALT SURFACE TREATMENT, SPLIT SEAL
C2	PROP. ASPHALT SURFACE TREATMENT, TRIPLE SEAL
U	EXISTING PAVEMENT




**SURRY COUNTY**  
ASPHALT SURFACE TREATMENT  
RESURFACING

DIVISION II

REVISIONS	INT.	DATE

**N.C. DEPARTMENT of TRANSPORTATION**  
DIVISION of HIGHWAYS  
DIVISION ELEVEN



SCALE: N/A DATE: 3/2012  
PREPARED BY: J.L. LAWS  
REVIEWED BY:  
REVISIONS BY: